

1. Open Stitcher



2. Choose your type of fish eye (chances are it's a Nikon)



3. Select the amount of fisheyes you used (Recommended 3)



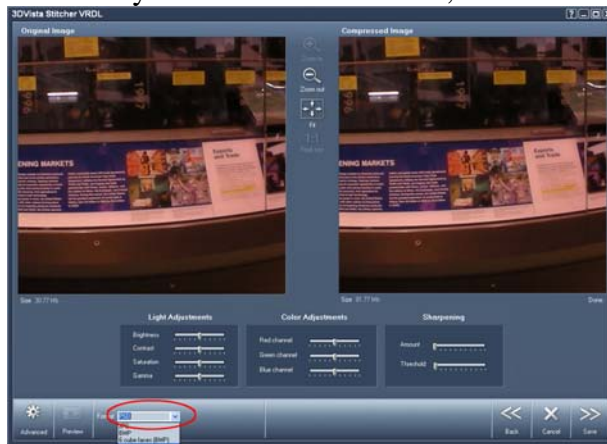
7. Choose Automatic



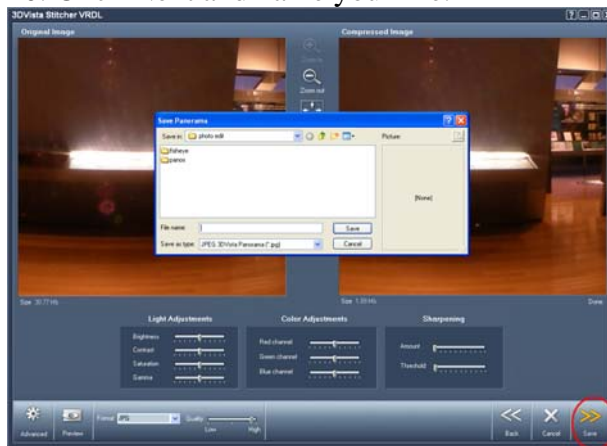
8. Click continue.



9. when you arrive at this screen , under format, click “PSD”



10. Click Next and name your file.



11. Now you have a layered Photoshop File that separates the panoramic into peaces allowing you to further edit and align the imperfections.

